

FLYNN ROAD BUSINESS PARK

4030-4040 ADOLFO RD., 1267-1283 FLYNN RD. | CAMARILLO, CA

INDUSTRIAL UNITS FOR SALE

6 INDUSTRIAL/FLEX
CONDOMINIUMS
TOTALING APPROX.
45,014 SF

Individual Unit Sizes:
4,640; 8,080; 9,787

www.cbre.com/frbp

For information, contact:

Paul Farry
805.465.1615
paul.farry@cbre.com

Doug Shaw
805.465.1627
doug.shaw@cbre.com

Jim Meaney
805.465.1621
jim.meaney@cbre.com

Corey Baggett
805.465.1651
corey.baggett@cbre.com

CB Richard Ellis
771 E. Daily Drive
Suite 300
Camarillo, CA 93010
T 805.465.1600
F 805.465.1665

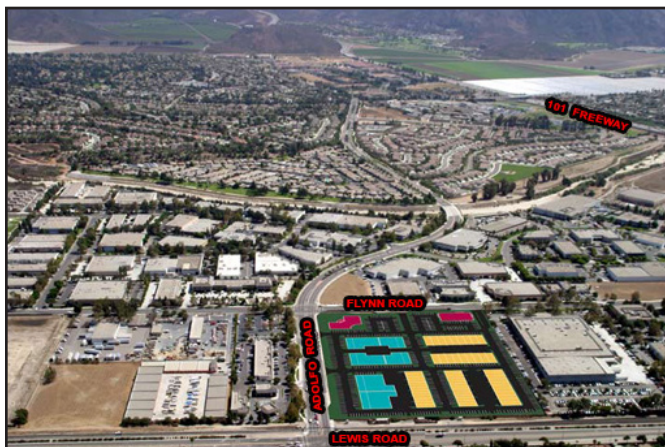
www.cbre.com/ventura



Located at the corner of Flynn and Adolfo Roads, Flynn Road Business Park offers an "A" location with easy access to 101 Freeway via Flynn Road, Santa Rosa Road or Lewis Road.

FEATURES

- Part of a Master Planned business center on approx. 13 acres
- Final phase of TOLD Corporation's Flynn Road Business Park
- Turn key units featuring maximum office build-out, upstairs and downstairs rest rooms, coffee bar on both floors and office finishes usually found only in high-end corporate offices
- Protective CC&Rs enhance value now and in the future
- High bay warehouse / 23' clear - 480V Power
- LOCATION - LOCATION - LOCATION



LOCATION

- Immediate access to the Ventura Freeway (US 101)
- Minutes from the Conejo Valley
- Traffic counts at retail level

©2008, CB Richard Ellis, Inc. We obtained the information above from sources we believe to be reliable. However, we have not verified its accuracy and make no guarantee, warranty or representation about it. It is submitted subject to the possibility of errors, omissions, change of price, rental or other conditions, prior sale, lease or financing, or withdrawal without notice. We include projections, opinions, assumptions or estimates for example only, and they may not represent current or future performance of the property. You and your tax and legal advisors should conduct your own investigation of the property and transaction.

CBRE
CB RICHARD ELLIS

FLYNN ROAD BUSINESS PARK

4030-4040 ADOLFO RD., 1267-1283 FLYNN RD. | CAMARILLO, CA

INDUSTRIAL UNITS FOR SALE

www.cbre.com/frbp

For information, contact:

Paul Farry
805.465.1615
paul.farry@cbre.com

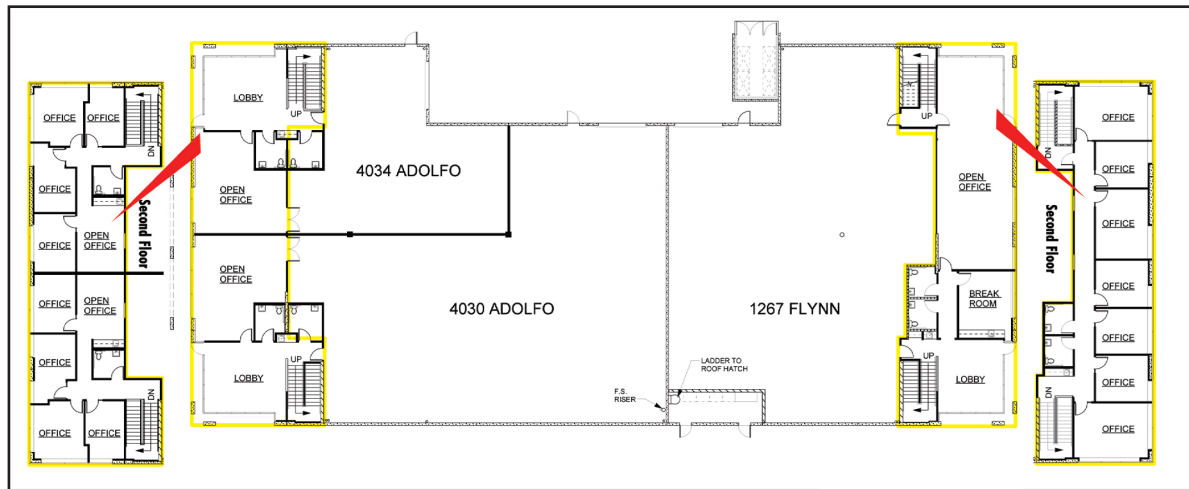
Doug Shaw
805.465.1627
doug.shaw@cbre.com

Jim Meaney
805.465.1621
jim.meaney@cbre.com

Corey Baggett
805.465.1651
corey.baggett@cbre.com

CB Richard Ellis
771 E. Daily Drive
Suite 300
Camarillo, CA 93010
T 805.465.1600
F 805.465.1665

www.cbre.com/ventura



SPECIFICATIONS

Power A 600*, V 277-480
Ø 3, W 4 *(A 400
4034-36 Flynn Rd.)

Doors One 12' x 14' G.L.

Clear Height 23'

Zoned M1

Year Built 2008

	1267/1283 Flynn Rd.	4040/4030 Adolfo Rd.	4034/4036 Flynn Rd.
Whse/Mfg	5,567 SF	5,680 SF	2,240 SF
Ground Floor Office	2,110 SF	1,200 SF	1,200 SF
Mezzanine Office	2,110 SF	1,200 SF	1,200 SF
Total Office	4,220 SF	2,400 SF	2,400 SF
Total SF	9,787 SF (43%)	8,080 SF (30%)	4,640 SF (52%)
Rate	\$209.46/SF	\$244.43/SF	\$253.23/SF
Price	\$2,050,000	\$1,975,000	\$1,175,000

©2008, CB Richard Ellis, Inc. We obtained the information above from sources we believe to be reliable. However, we have not verified its accuracy and make no guarantee, warranty or representation about it. It is submitted subject to the possibility of errors, omissions, change of price, rental or other conditions, prior sale, lease or financing, or withdrawal without notice. We include projections, opinions, assumptions or estimates for example only, and they may not represent current or future performance of the property. You and your tax and legal advisors should conduct your own investigation of the property and transaction.

CBRE
CB RICHARD ELLIS